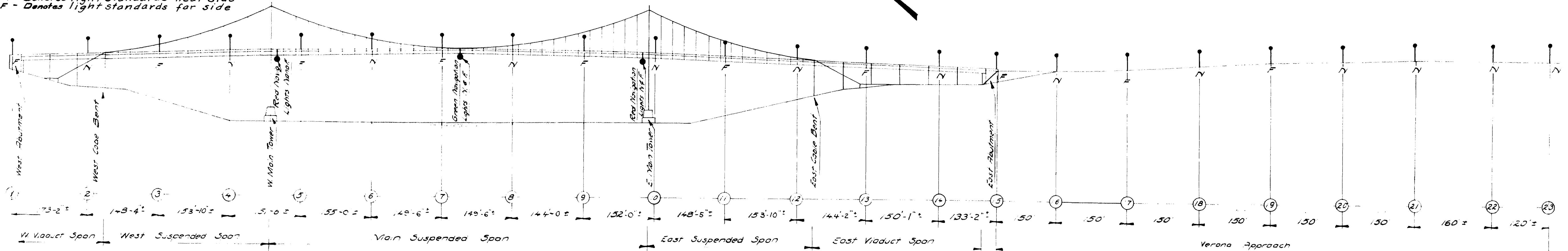


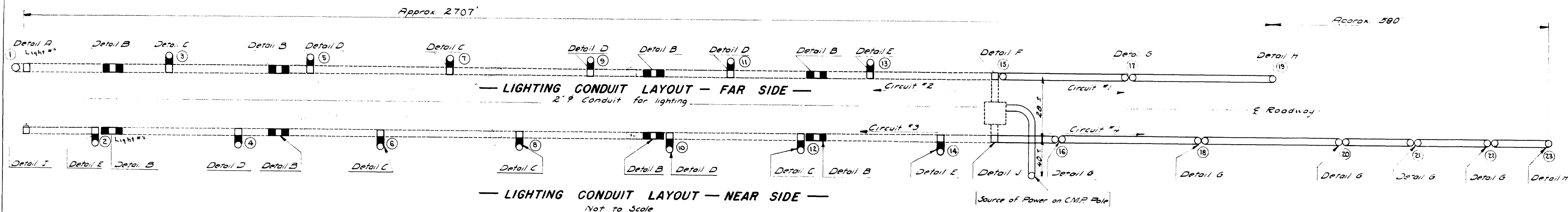
WEST
(PROSPECT)

EAST
(VERONA)

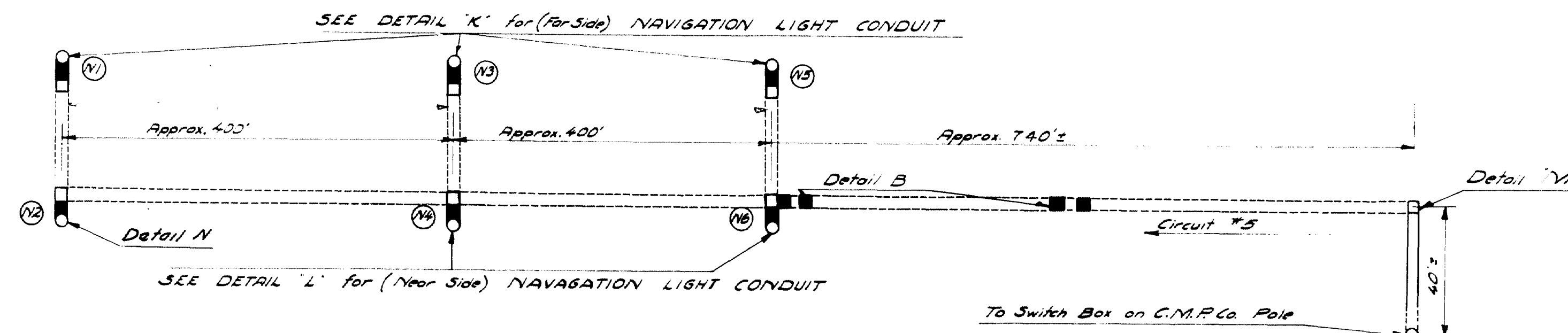
N - Denotes light standards near side
F - Denotes light standards far side



— ELEVATION OF BRIDGE AND EAST APPROACH —
Scale 1" = 100'



— LEGEND —	
	EXPOSED CONDUIT
	UNDERGROUND CONDUIT
	FLEXIBLE CONDUIT
	CONDUIT PULL BOX
	CONDUIT PULL BOX PIPE PLUG
	LONG SWEEP BENDS
	JUNCTION BOX



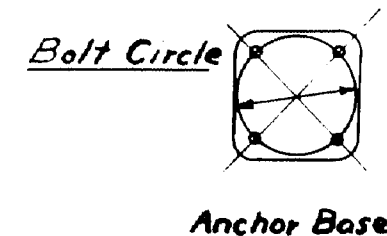
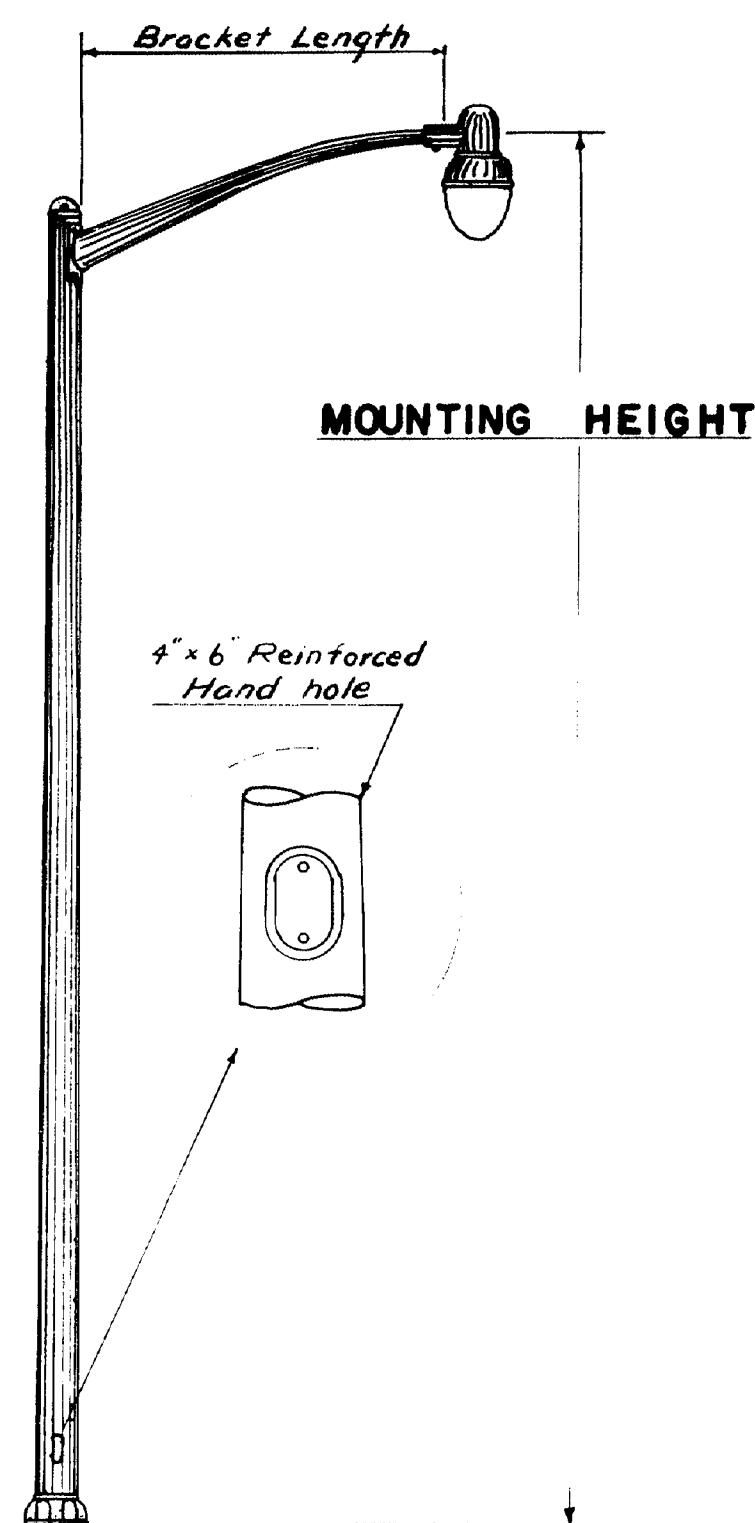
— CONDUIT LAYOUT FOR NAVIGATION LIGHTS —
Not to Scale

Notes
All Light Standards to be set plumb.
Numbers in circles indicate mark of New Standards.
Pull wires shall be installed in all conduits.
All conduit to be galvanized.

DESIGN - MURRELL
TRACE - BAILEY
CHECK - *[Signature]*
BRIDGE - 3008
STATE HIGHWAY COMMISSION
BRIDGE DIVISION
WALDO - HANCOCK BRIDGE
OVER
PENOBSCOT RIVER
BETWEEN THE TOWNS OF
PROSPECT & VERONA
WALDO & HANCOCK COUNTIES
— LIGHTING SYSTEM —
— GENERAL PLAN —
SHEET 1 OF 7 AUGUSTA, MAINE APRIL 1954

60-184

0 1 2 3 4 5 INCHES



ALUMINUM STANDARD as mfg. by HUBBARD
ALUMINUM PRODUCTS CO. PITTSBURGH, PA.
(or equivalent)

Pole Type 1, Bracket Style 5

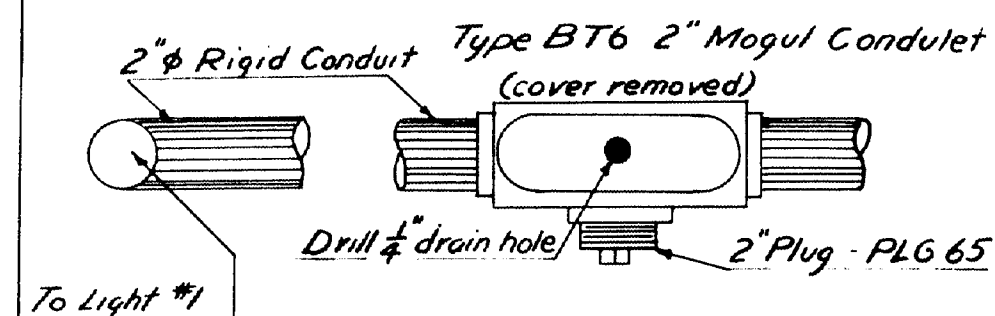
STANDARDS REQUIRED

HUBBARD NUMBER	STANDARD NUMBER	Mounting Height	Bracket Length	Bolt Circle	Number Required
1282558	3, 6, 7, 8, 12	26'-0"	8'-0"	10"	5
1322758	2, 13, 14, 16, 17, 18, 19, 20, 21, 22, 23	28'-6"	8'-0"	11"	11
1282556	4, 5, 9, 10, 11	26'-0"	6'-0"	10"	5
1322556	1 and 15	26'-0"	6'-0"	11"	2

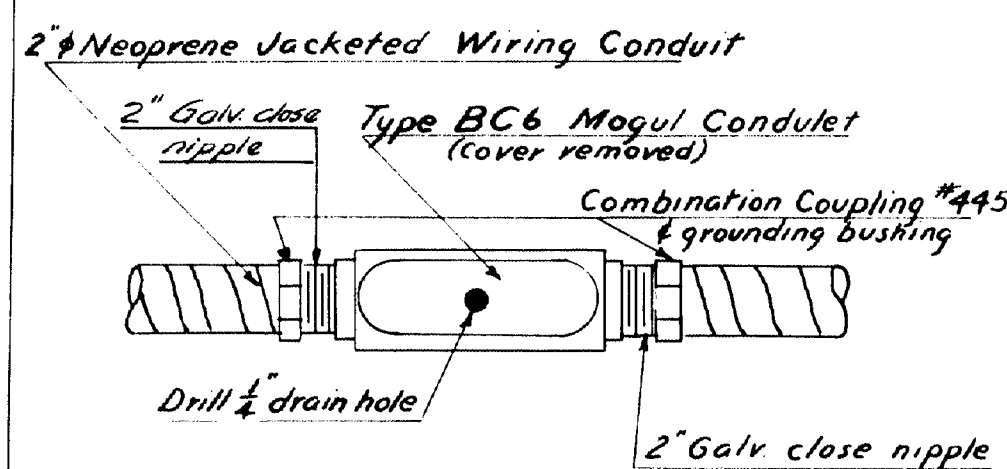
All Standards with 4"x6" handhole and cover

PENDANT LUMINAIRE

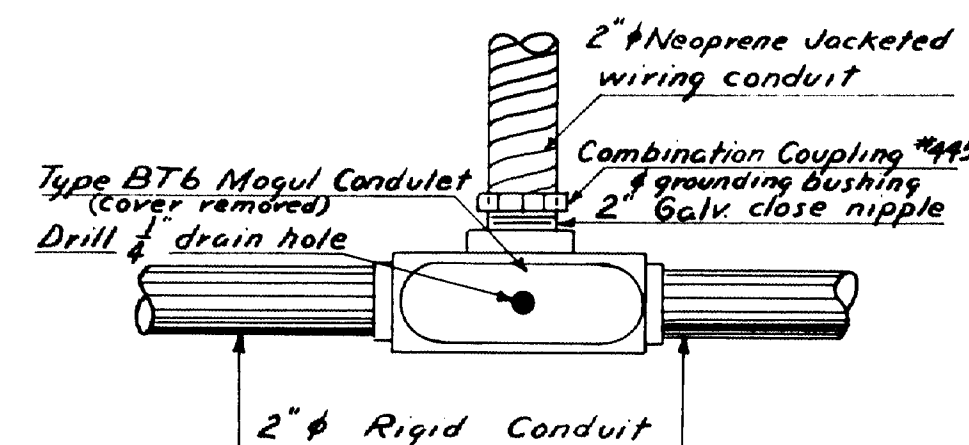
General Electric 101R C-Symmetric
#A46 136 or equivalent
(To be supplied by others.)



DETAIL A

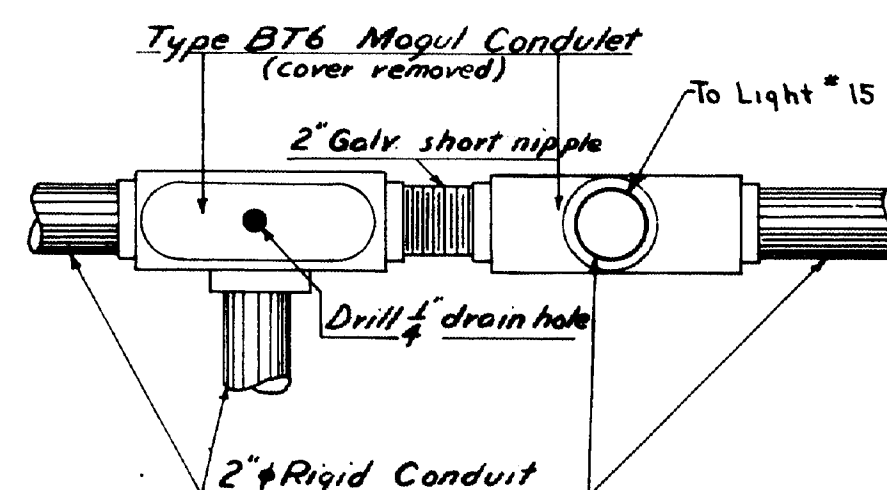


DETAIL B

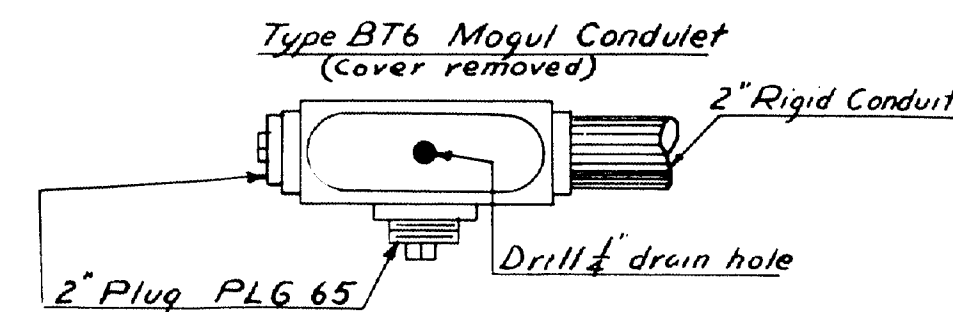


DETAIL C, D, and E

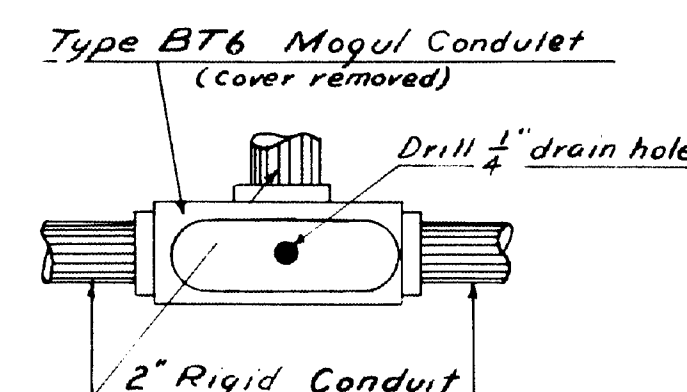
Detail "C" as shown. Details "D" and "E" same except for length of flexible conduit and position of assembly.



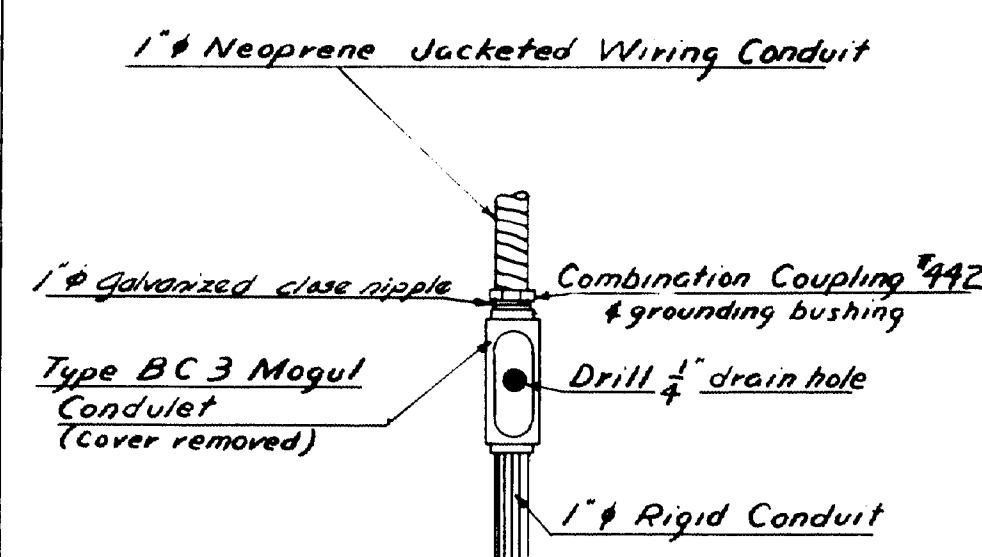
DETAIL F



DETAIL I



DETAIL J



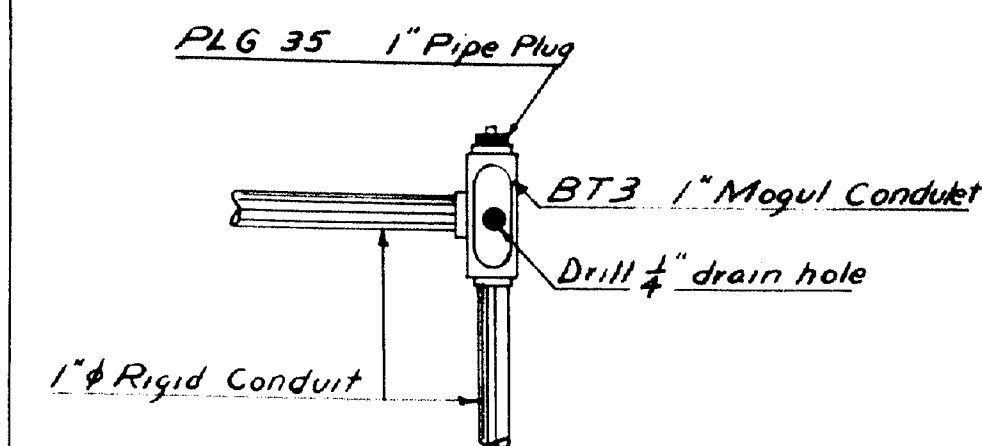
DETAIL K

DETAIL "L" - Use BX3 Mogul Conduit and 1" Neoprene Jacketed Wiring Conduit to Navigation Lights N4, N16 and 1" rigid conduit at other hubs. See Sheet "I" "Conduit Layout for Navigation Lights" BX3 is a Crouse-Hinds fitting.

DETAIL L

DETAIL "B" for Navigation Lights similar to detail "B" for Lighting circuit except use BC-3 Mogul Conduit and 1" rigid and Neoprene Jacketed Wiring Conduit.

DETAIL B NAVIGATION LIGHTS



DETAIL M

CONDULET COVERS

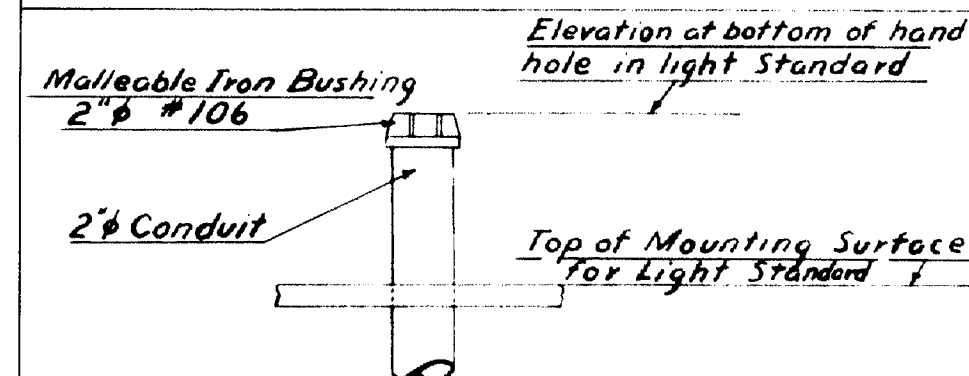
All condulets require a blank Cast Ferrel Cover BG 47 for 1" condulets and BG 67 for 2" condulets

JUNCTION BOX

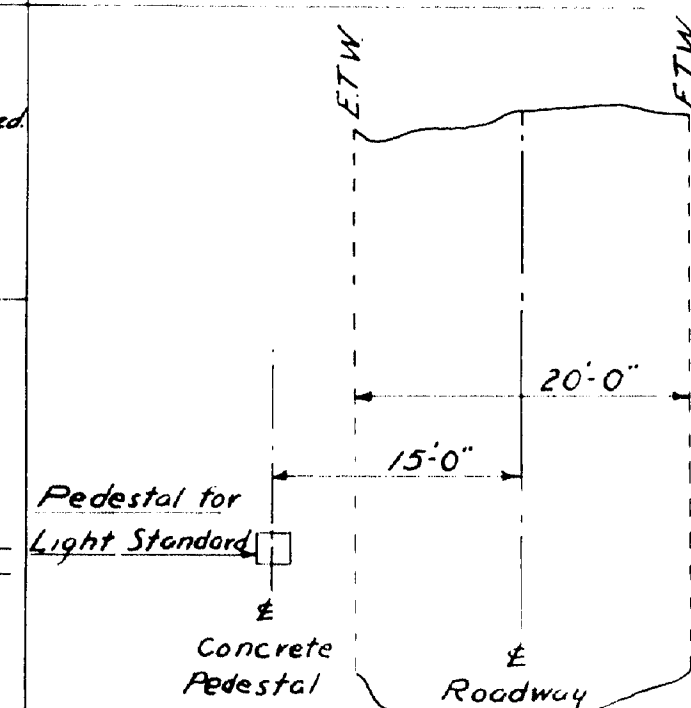
(Columbia Screw Cover Pull Box)
Screw cover type 16 gage galvanized steel without knockouts Size 12"x12"x6"

NOTE

All conduit, flexible conduit, and fittings are those listed in Wesco Catalog #100 (1949) unless noted. References to Catalog number serve as a guide. Substitutions may be made provided they are equivalent and are approved by the Underwriters Laboratories Inc.

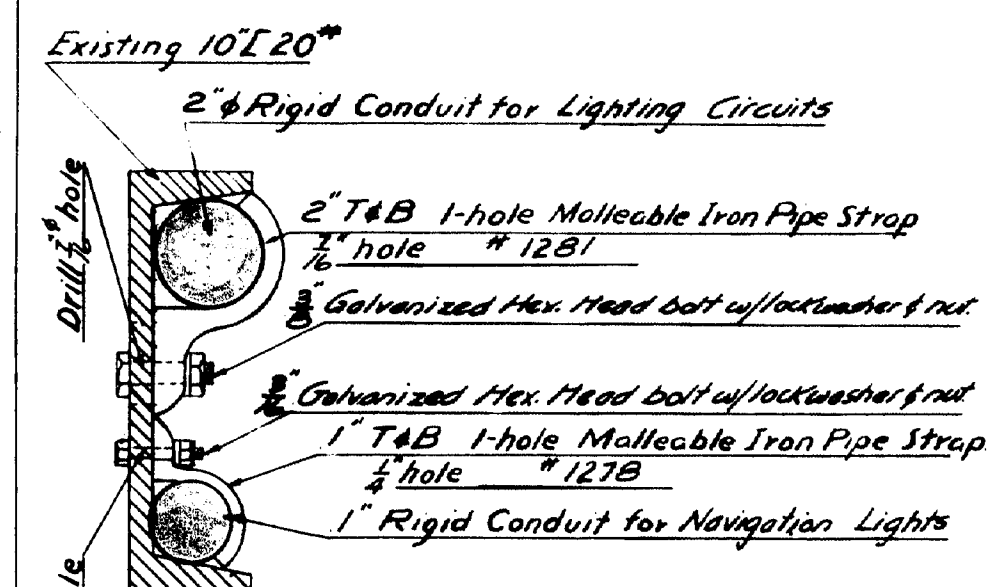


CONDUIT TERMINATION for all LIGHT STANDARDS



LOCATION OF CONCRETE PEDESTALS VERONA APPROACH

Light Standards 16 to 23 inclusive

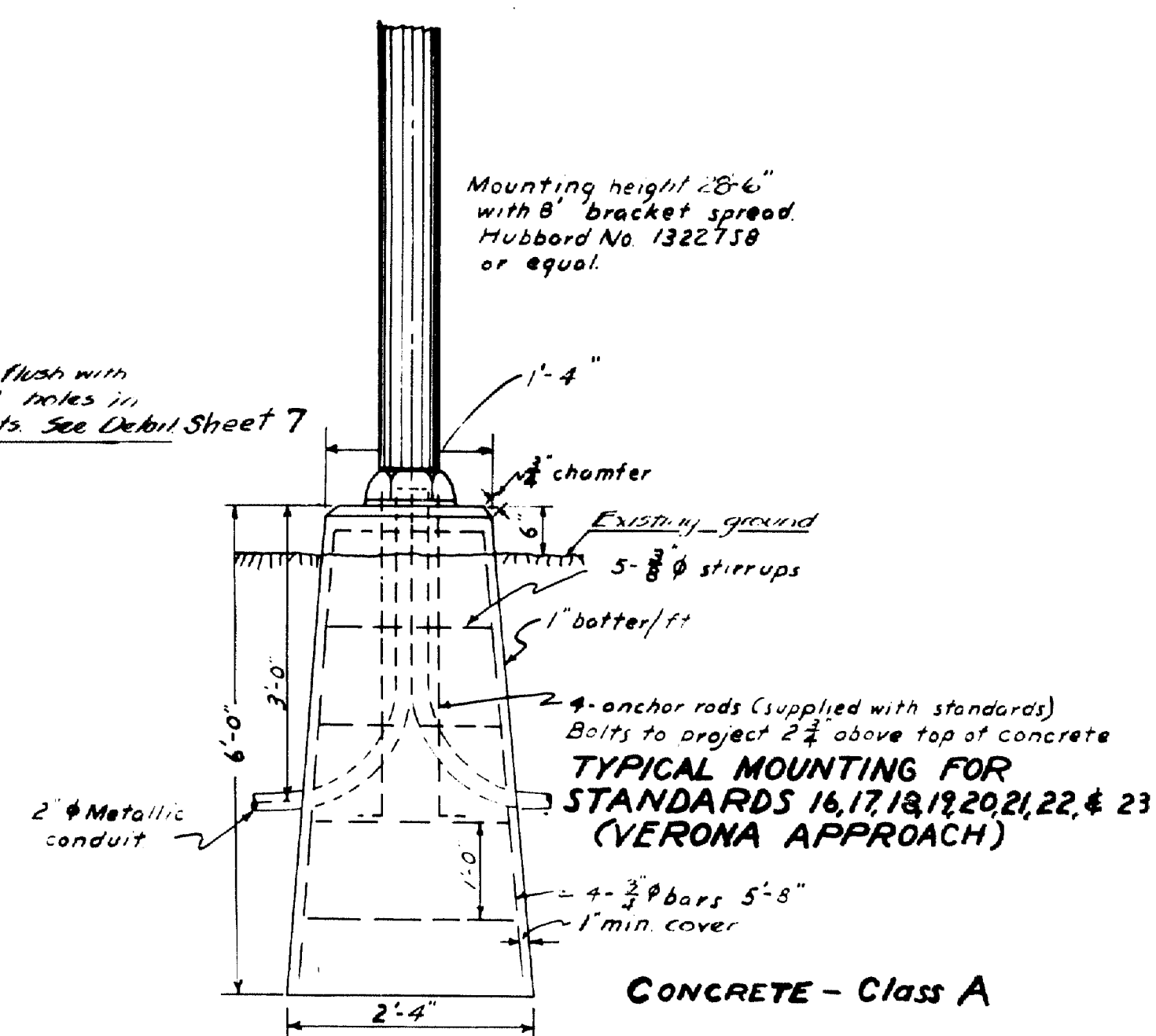
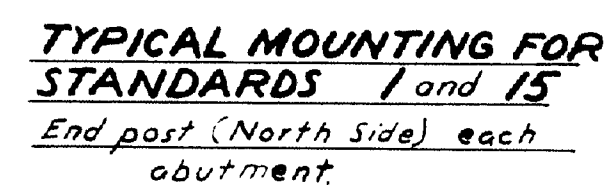
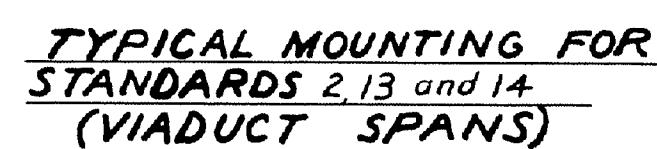
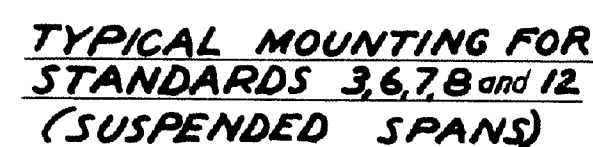


CONDUIT SUPPORT DETAILS VIADUCT SPANS

For Conduit support details for suspended spans see sheet No. 6

DESIGN - MURRELL	BRIDGE - 3008
TRACE - SMITH	
CHECK - MURRELL	
STATE HIGHWAY COMMISSION BRIDGE DIVISION	
WALDO - HANCOCK BRIDGE OVER PENOBSCOT RIVER BETWEEN THE TOWNS OF PROSPECT & VERONA WALDO - HANCOCK COUNTIES - LIGHTING SYSTEM -	
- LIGHT STANDARD, CONDUIT, & DETAILS -	
SHEET 2 OF 7 AUGUSTA, MAINE APRIL 1954	

60-155

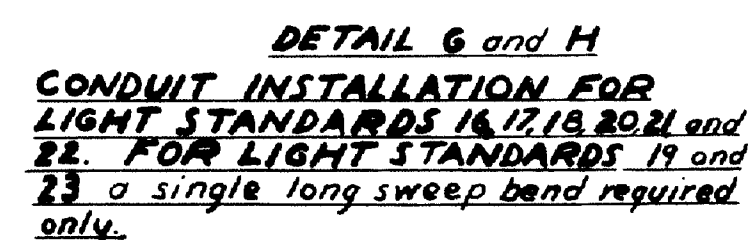
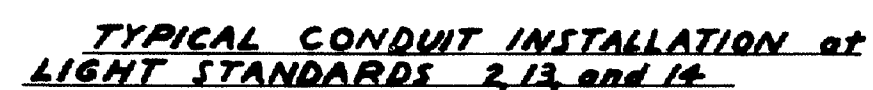
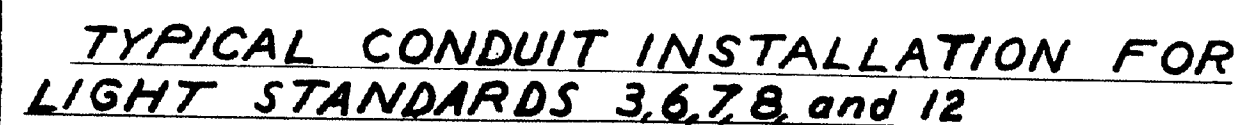


TYPICAL STANDARD MOUNTINGS

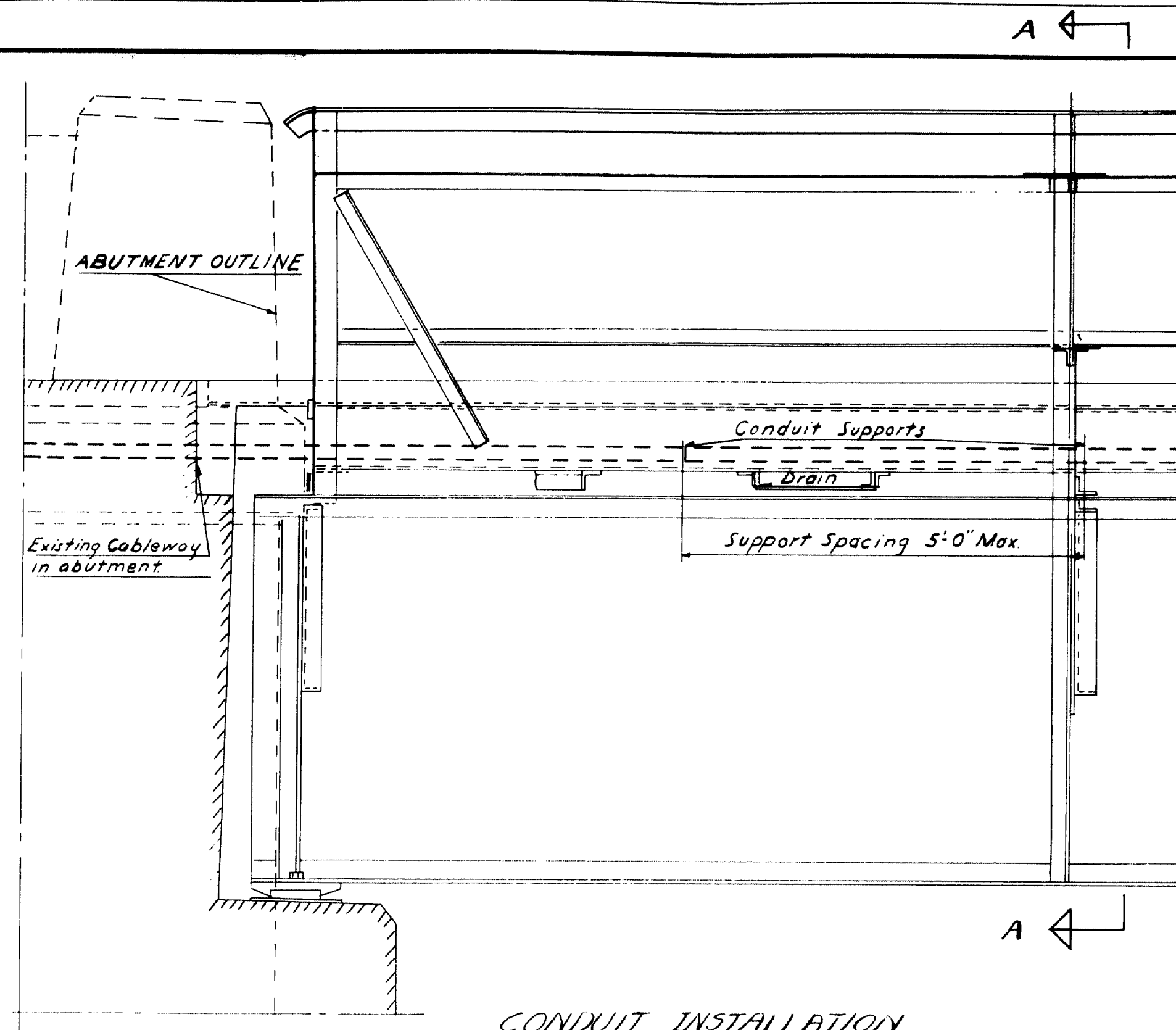
NOTE

NOTE
Coat all surfaces that come in contact with aluminum light standards, including concrete, and bolts, nuts and washers with an aluminum impregnated caulking compound.

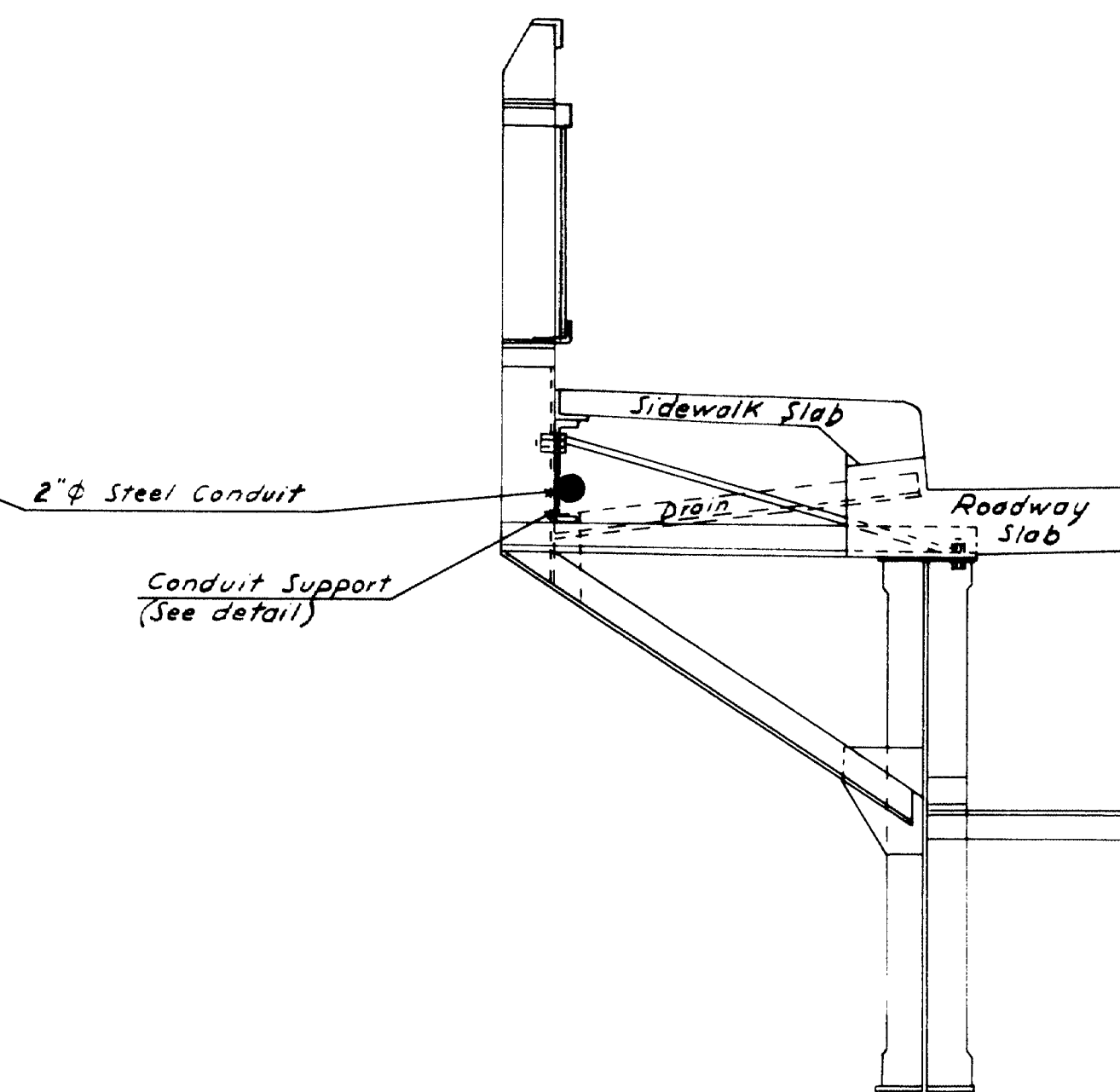
TYPICAL CONDUIT INSTALLATION AT LIGHT STANDARDS



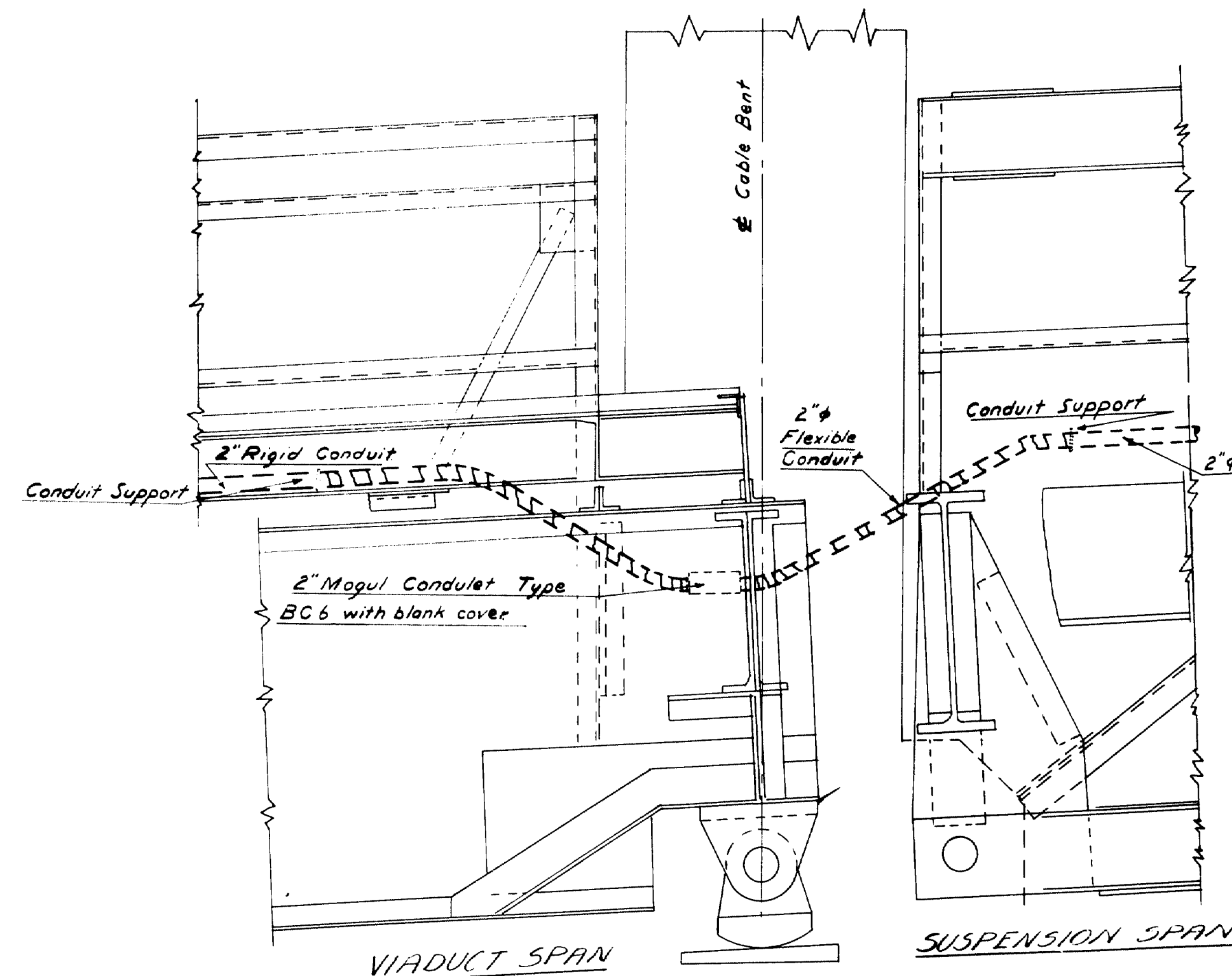
DESIGN-MURRELL TRACE-SMITH CHECK - <i>SW</i>	BRIDGE-3068
STATE HIGHWAY COMMISSION BRIDGE DIVISION WALDO - HANCOCK BRIDGE OVER PENOBSCOT RIVER BETWEEN THE TOWNS OF PROSPECT & VERONA WALDO-HANCOCK COUNTIES -LIGHTING SYSTEM- -LIGHT STANDARD & CONDUIT DETAILS- SHEET 3 OF 7 AUGUSTA, MAINE MAY, 1954	



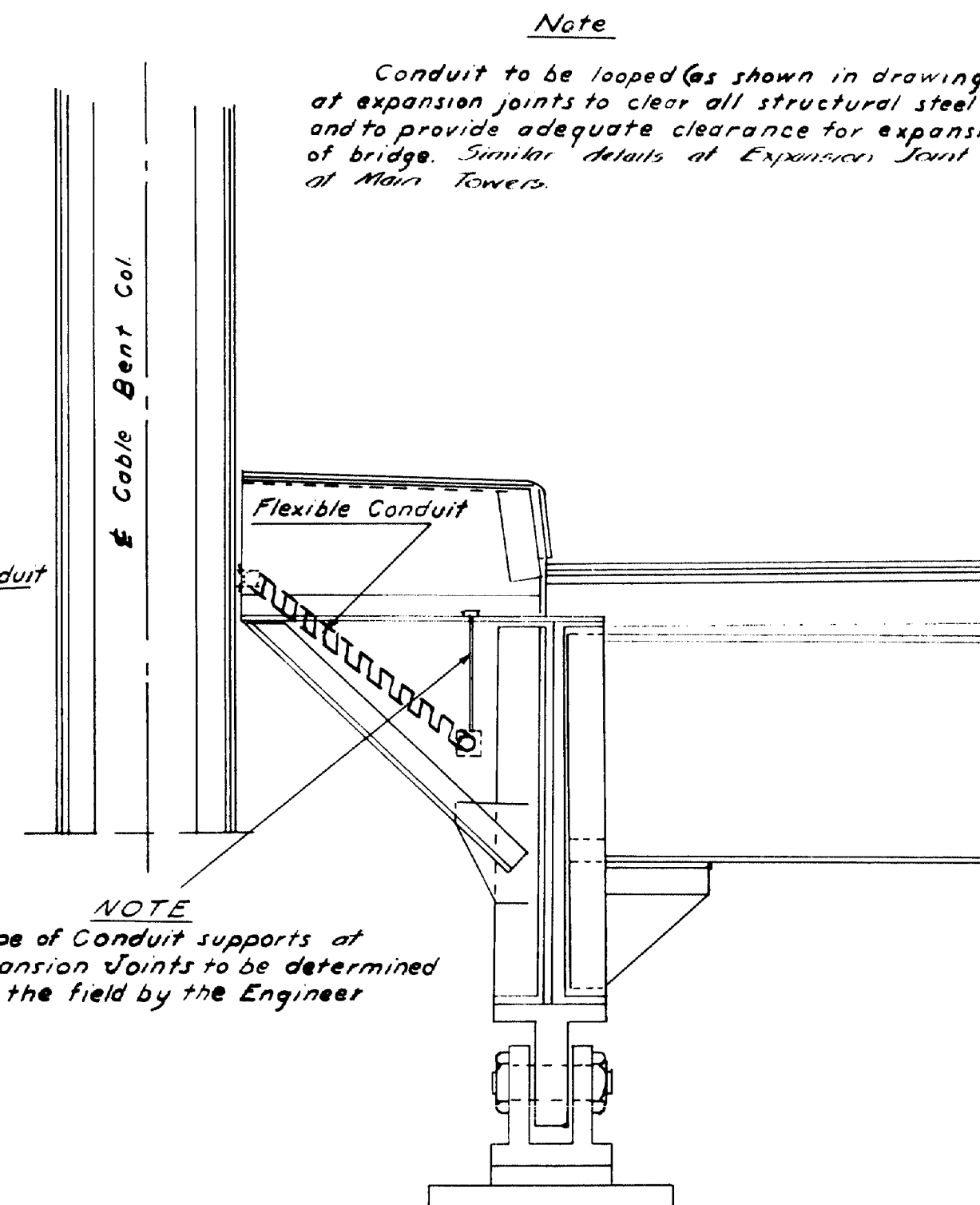
CONDUIT INSTALLATION
ABUTMENTS and VIADUCTS



SECTION A-A



CONDUIT DETAIL at EXPANSION JOINTS



PART END VIEW of VIADUCT SPAN at EXPANSION JOINTS

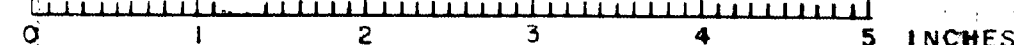
Note

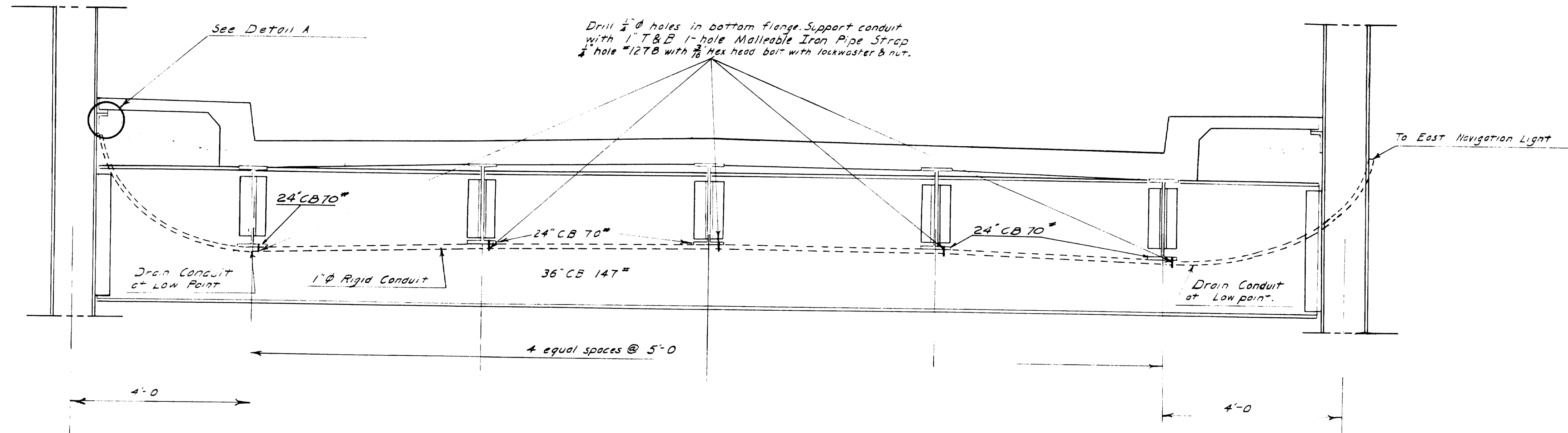
Conduit to be looped (as shown in drawing) at expansion joints to clear all structural steel and to provide adequate clearance for expansion of bridge. Similar details at Expansion Joint at Main Towers.

NOTE
Type of Conduit supports at Expansion Joints to be determined in the field by the Engineer

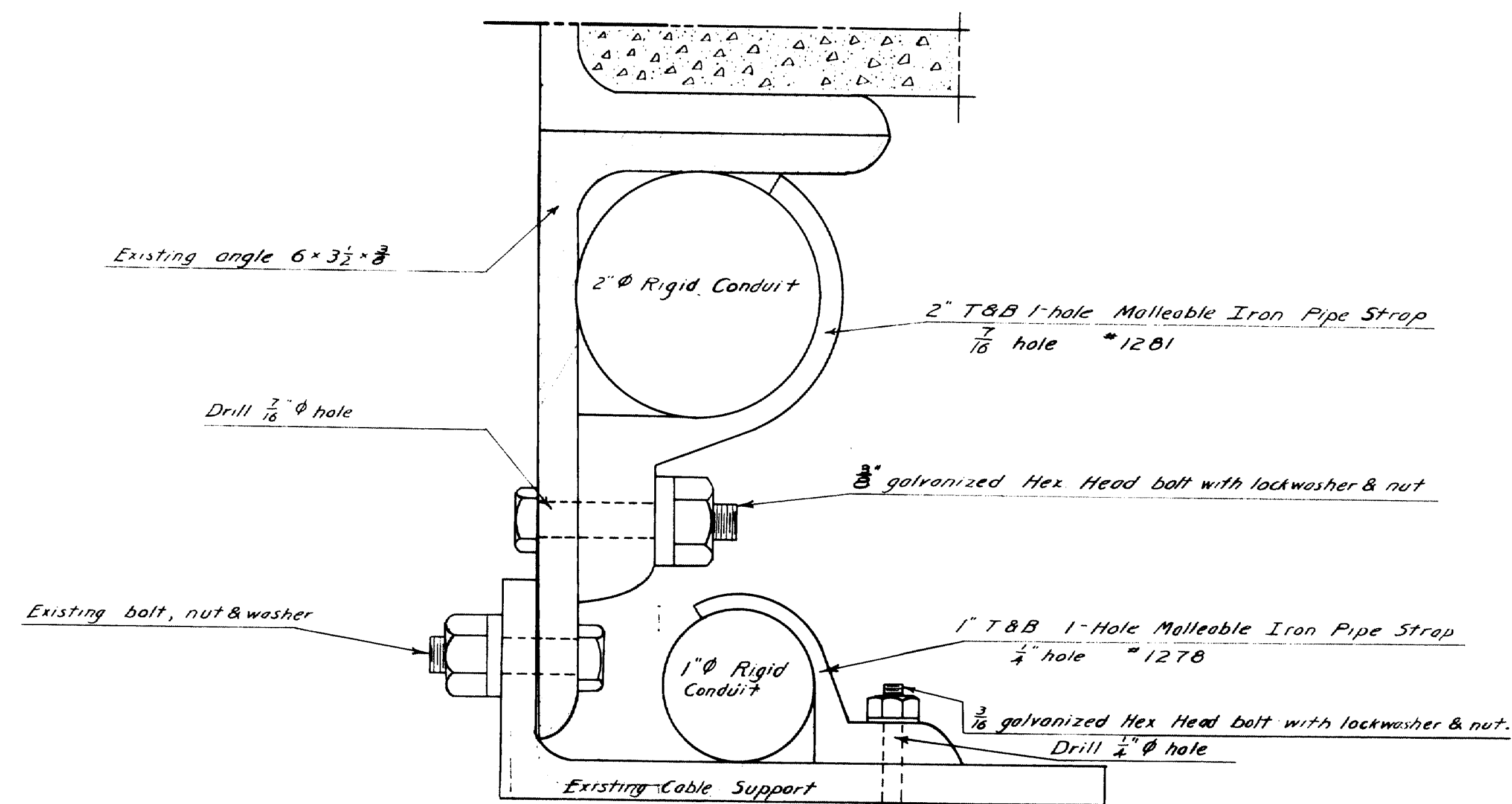
DESIGN - MURRELL	BRIDGE - 300B
TRACE - SMITH	
CHECK - SMITH	
STATE HIGHWAY COMMISSION	
BRIDGE DIVISION	
WALDO-HANCOCK BRIDGE	
OVER	
PENOBSCOT RIVER	
BETWEEN THE TOWNS	
PROSPECT & VERONA	
WALDO-HANCOCK COUNTIES	
EXPANSION DETAILS	
SHEET 4 OF 7	AUGUSTA, MAINE MAY 1954

60-157





TYPICAL CONDUIT INSTALLATION UNDER SUSPENDED SPAN ROADWAY FOR EAST NAVIGATION LIGHTS

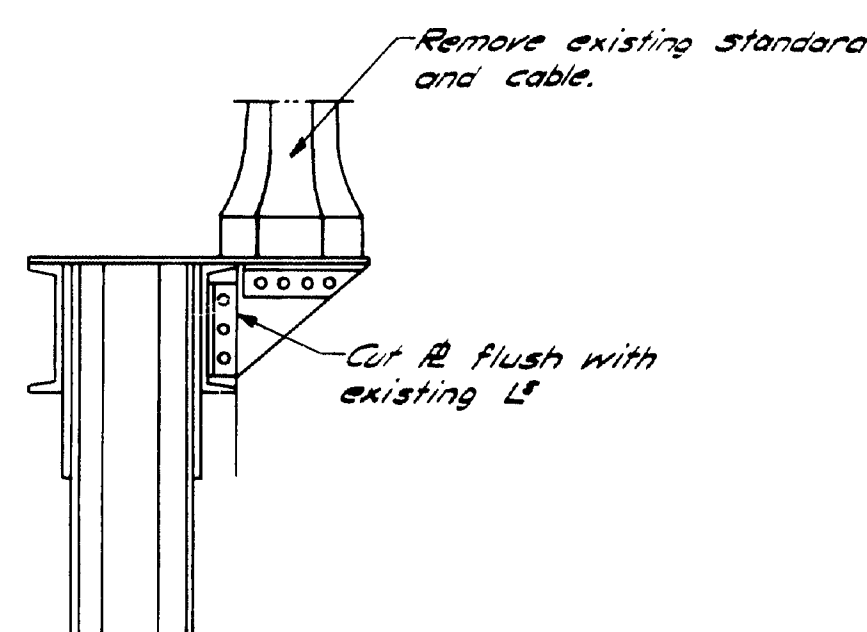
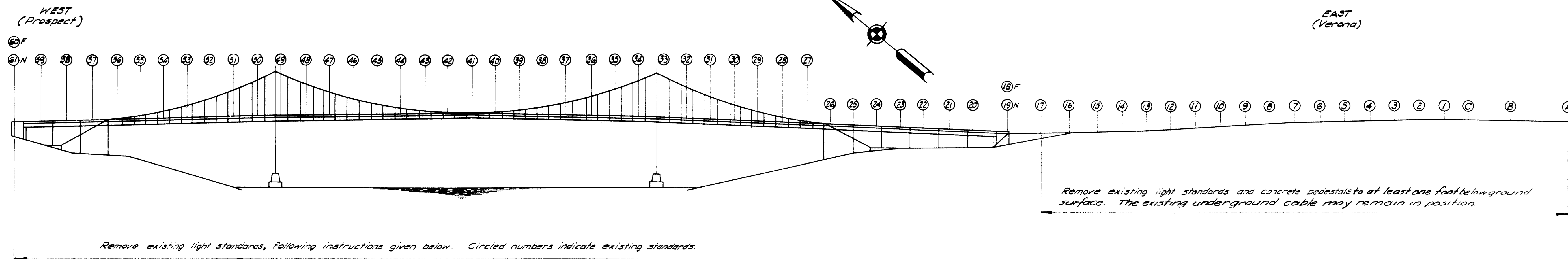


DETAIL A
SUGGESTED METHOD OF SUPPORTING 1" and 2" CONDUITS ON SUSPENDED SPANS

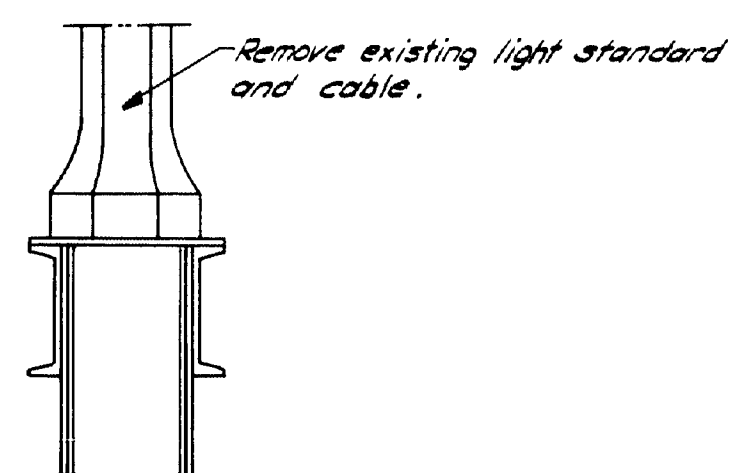
DESIGN - MURRELL TRACE - CUTTING CHECK - <i>[Signature]</i>	BRIDGE - 3008
STATE HIGHWAY COMMISSION BRIDGE DIVISION WALDO - HANCOCK BRIDGE OVER PENOBSCOT RIVER BETWEEN THE TOWNS OF PROSPECT & VERONA WALDO - HANCOCK COUNTIES TRANSVERSE CONDUIT DETAILS SUSPENDED SPANS SHEET 6 OF 7 AUGUSTA, MAINE JUNE 1954	

60-159

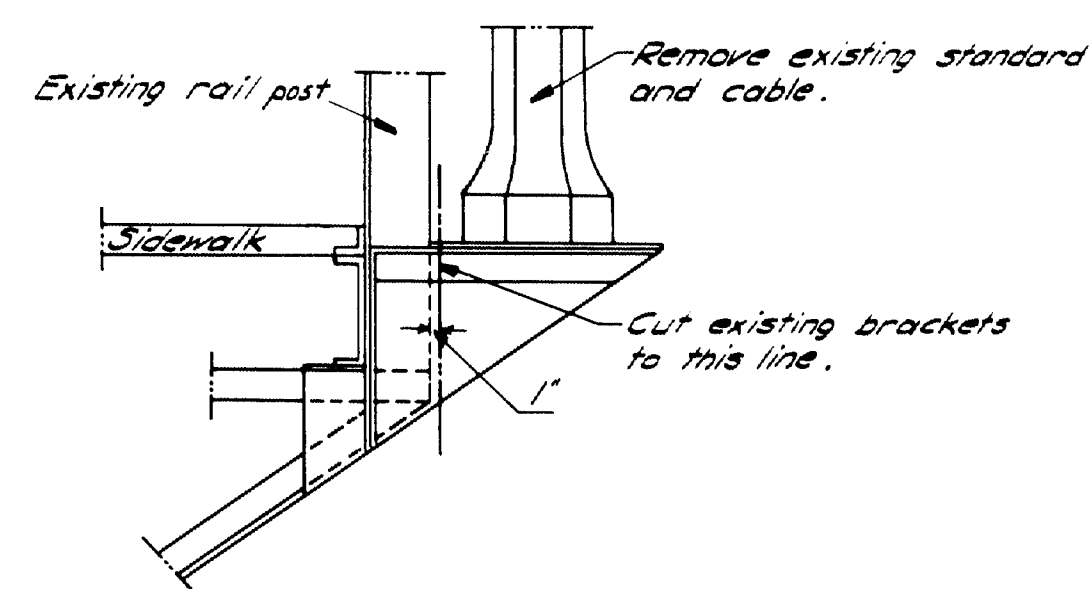
0 1 2 3 4 5 INCHES



EXISTING BRACKET & LIGHT STANDARD

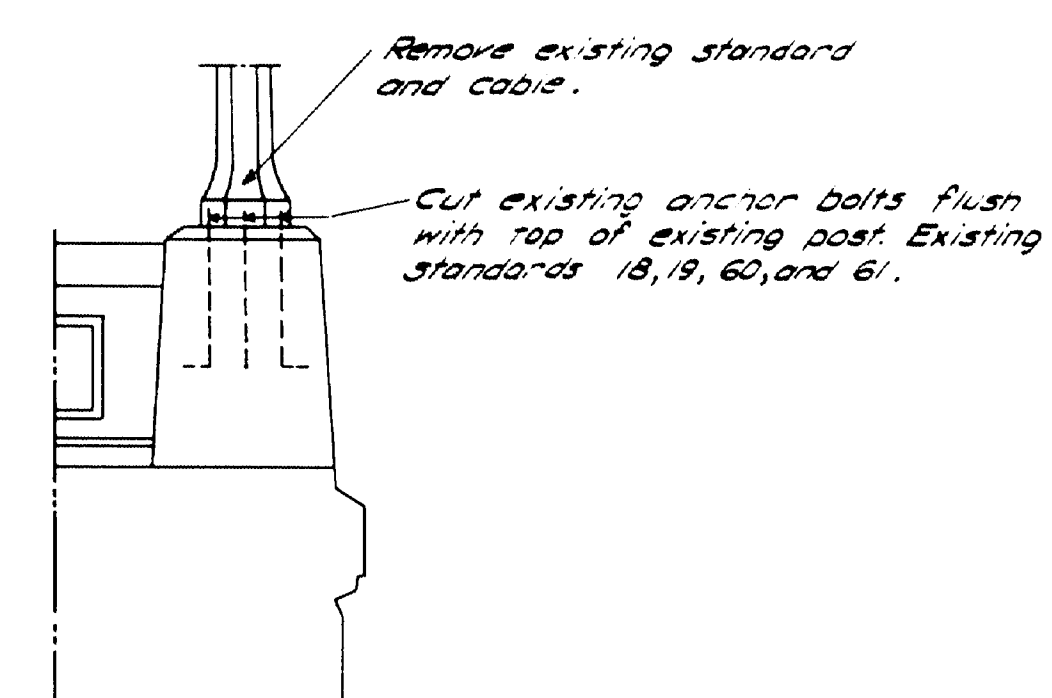


EXISTING MOUNTING FOR STANDARDS MOUNTED ON TOP OF STIFFENING TRUSS

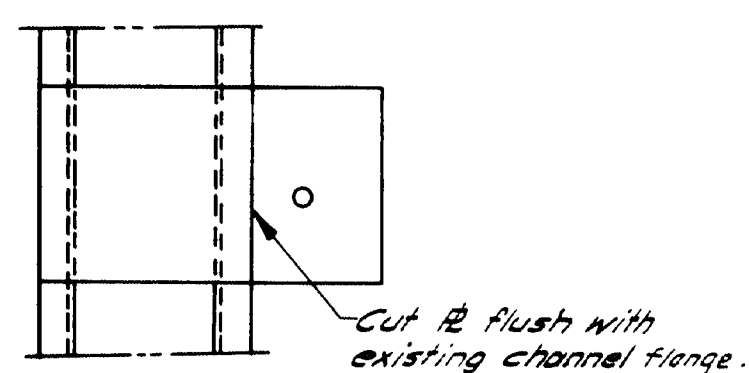


EXISTING BRACKET & LIGHT STANDARD

Field work required on existing light standard brackets Viaduct Spans. 10-Brackets. Existing locations 20, 21, 22, 23, 24, 25, 26, 57, 58 & 59.

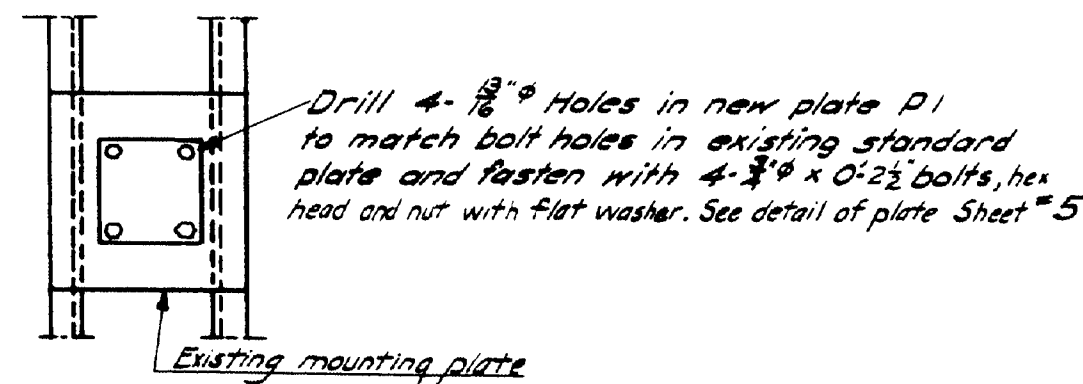


FIELD WORK REQUIRED ON EXISTING STANDARDS AT ABUTMENTS.



TOP VIEW EXISTING BRACKET

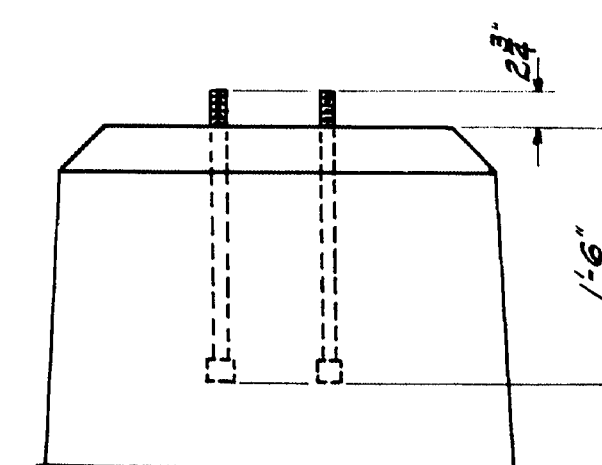
Field work required on existing light standard brackets. on Suspended Spans. 8-Brackets. Existing standards 27, 39, 40, 41, 42, 43, 55 & 56.



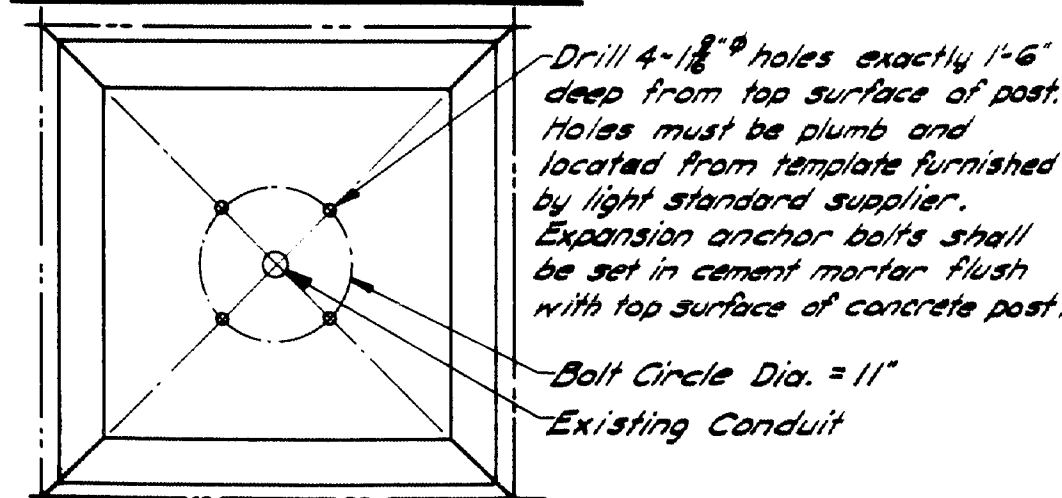
TOP VIEW - STANDARD REMOVED

Field work required on existing light standard (Suspended Spans) except at points where new standards 4, 5, 9, 10 & 11 are located. 17-places. Existing locations 28, 29, 31, 32, 34, 35, 37, 38, 44, 45, 46, 47, 49, 50, 52, 53, & 54.

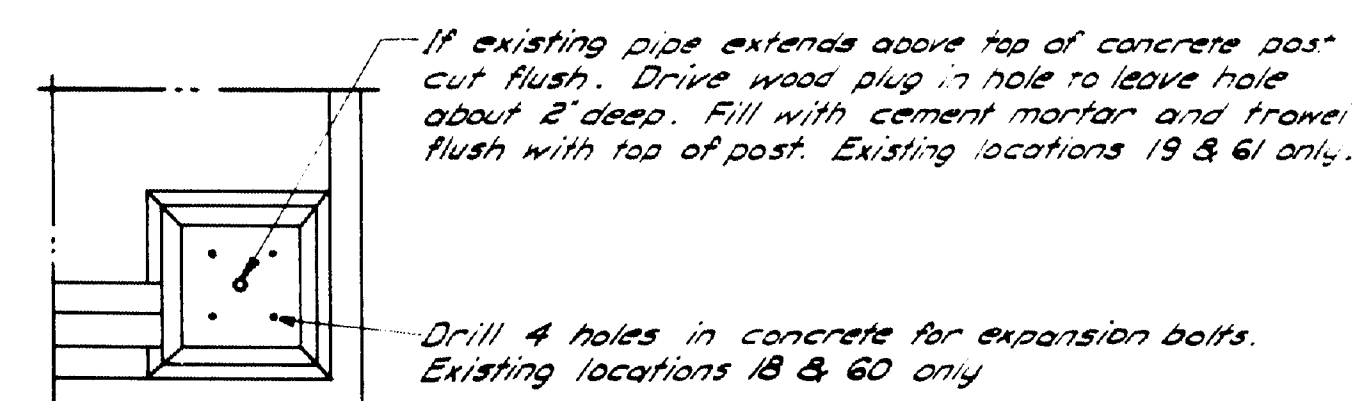
NOTE: Existing light standards and cable to be removed at locations 30, 33, 36, 48 & 51 but existing mounting plates to be used for mounting new standards.



ABUTMENT END POSTS



EXPANSION ANCHOR BOLT INSTALLATION FOR NEW STANDARDS 1 & 15



TOP VIEW OF ABUTMENT END POSTS - STANDARD REMOVED

DESIGN - MURRELL	BRIDGE - 3008
TRACE - CLARK	STATE HIGHWAY COMMISSION
CHECK - [initials]	BRIDGE DIVISION
WALDO-HANCOCK BRIDGE	
OVER	
PENOBSCOT RIVER	
BETWEEN THE TOWNS OF	
PROSPECT & VERONA	
WALDO-HANCOCK COUNTIES	
FIELD WORK REQUIRED AT	
EXISTING STANDARDS	
SHEET 7 OF 7 AUGUSTA, MAINE JUNE, 1954	

60-160